

Meeting and Event Room  
**BOOKINGS**

---



# About Providence Village

Providence Village is a welcoming community where partners provide complementary care and services to support the health and wellness needs of people living in Kingston, Frontenac, Lennox and Addington.

The Village sits on a 30-acre property located at 1200 Princess Street in Kingston, Ontario, which includes sublease spaces inside the historic Providence Motherhouse, capital build opportunities on the expansive grounds, and community rentals.

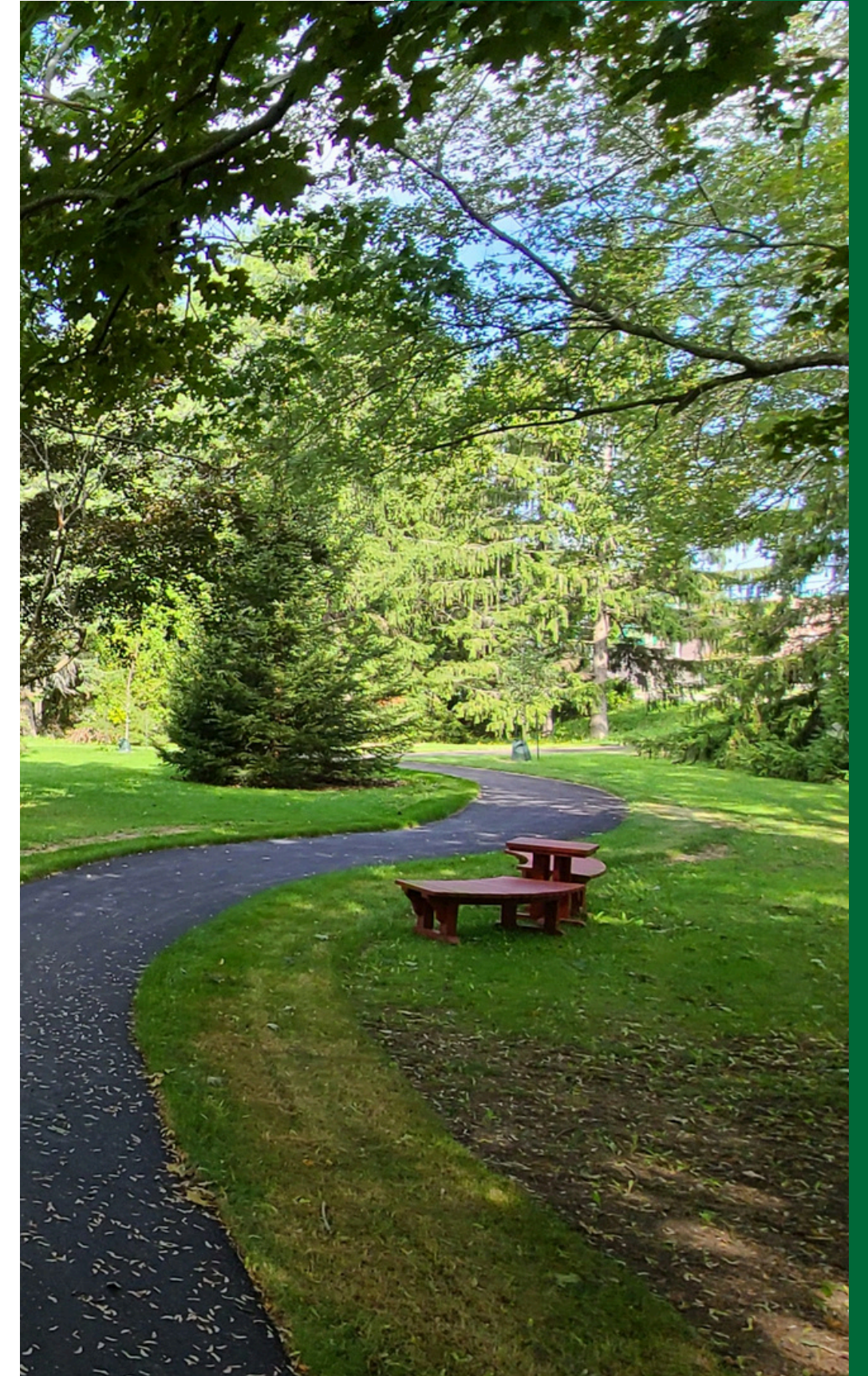
Founded by the Sisters of Providence of St. Vincent de Paul, Providence Village is an independent not-for-profit charitable organization sponsored by the Catholic Health Sponsors of Ontario (CHSO).



# Land Acknowledgement

Providence Village is located in Katarokwi, on the unceded ancestral lands of the Anishinaabe, Haudenosaunee, and Huron-Wendat Peoples—a place that has long been home to diverse First Nations, Inuit, and Métis Peoples. With humility and respect, we express our gratitude to Indigenous Peoples for their stewardship of these lands since time immemorial and we honour their deep connection to the land.

We are grateful for the land's nourishment and gifts and recognize our shared responsibility to protect and sustain the land for all our relations, now and for generations to come. We acknowledge the profound and lasting impacts of colonization on Indigenous Peoples and commit to meaningful reconciliation. Our commitment extends beyond words—we strive to listen, learn, and walk together with Indigenous communities and to actively and intentionally contribute to a future of healing that upholds Indigenous rights, cultures, and traditions.



# The History Of Providence Motherhouse

**1861**

Sisters of Providence arrive in Kingston.

**1931**

Construction begins on the limestone-clad building, which would become known as Providence Motherhouse, to serve as a Novitiate and home for the Sisters.

**1930**

The Sisters of Providence of St. Vincent de Paul purchase Heathfield, a 30-acre property previously used as a farm.

**1954, 1964, 1969**

Additions are made to Providence Motherhouse to accommodate additional rooms, administration offices, a new kitchen and dining room, and a new Chapel.



# Welcoming Spaces

At Providence Village, we are passionate about supporting the needs of our community, and we are pleased to offer accessible and versatile spaces at the Village for community use.

Whether you're planning a meeting, celebration, workshop, or special event, we have a variety of rental spaces to accommodate both small and large groups.

- ✓ **Inclusive & accessible** – Spaces for all types of community activities.
- ✓ **Affordable rental rates** – Based on a cost-recovery model.
- ✓ **Flexible options** – Various room sizes and setups to meet your needs.
- ✓ **Clean environment** – Regular maintenance ensures a comfortable experience.
- ✓ **Safe** - Daily reception coverage, after hours security and secure building access.
- ✓ **Picturesque environment** - Rentals on a scenic property surrounded by nature.





# McKinley Hall

Spacious and versatile venue; perfect for events, conferences, workshops, and large meetings. Can be divided into two sections to accommodate various needs.

Option to rent two adjoining side rooms for additional space.

**Location:** Lower Level

**Capacity:** 270

**A/V:** Screen, projector, microphone and sound system



# Marillac Room

A bright, private meeting room with large windows and flexible modular tables and comfortable ergonomic chairs that can be arranged to suit your group's needs. The space includes a buffet counter ideal for coffee, tea, or catering setup, and is equipped with modern A/V technology for hybrid meetings.

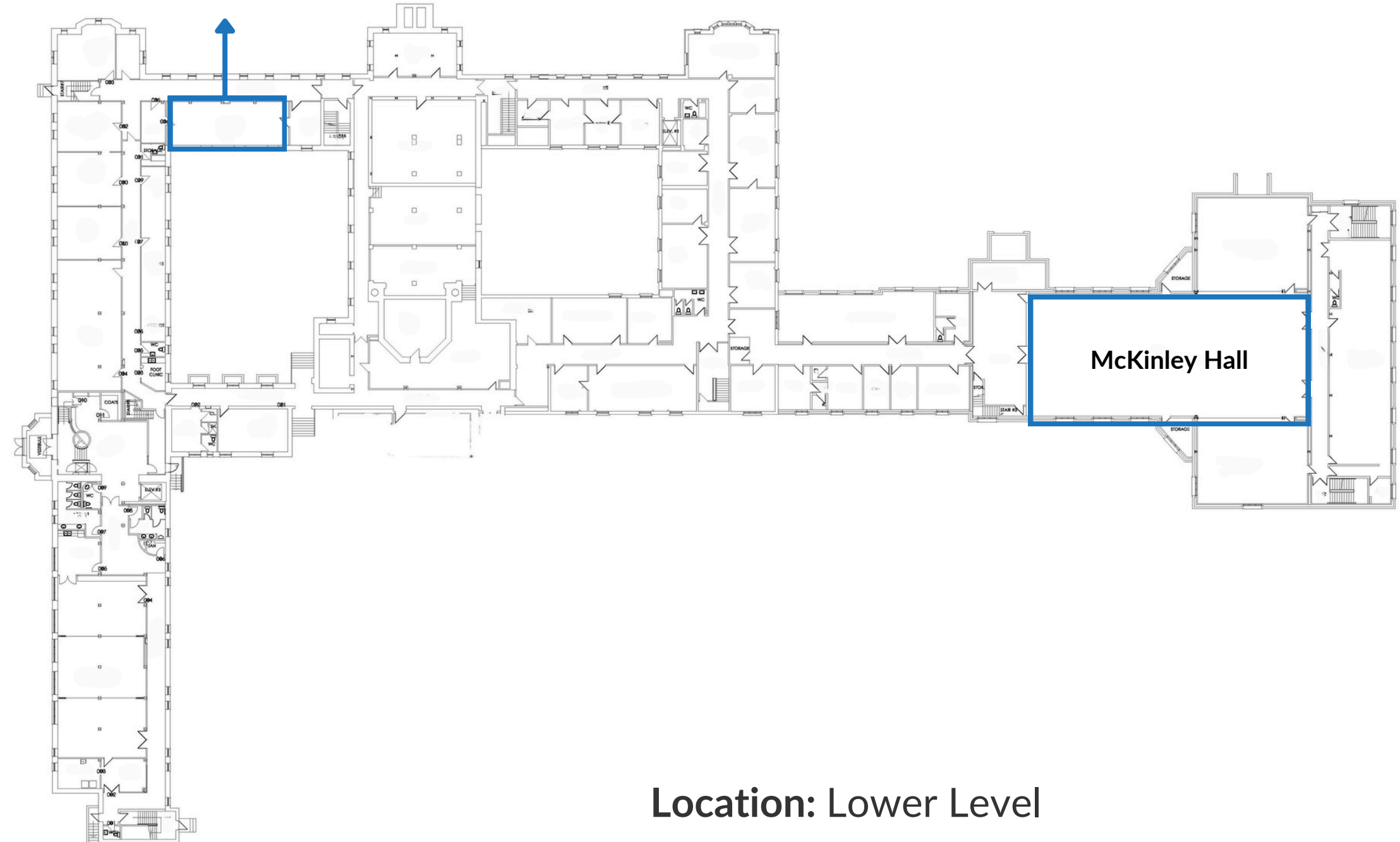
**Location:** Lower Level

**Capacity:** Up to 26 (depending on layout)

**A/V:** Mobile screen with computer hookup; Meeting Owl ( 360° camera, mic, and speaker device)

↑  
*Princess Street*

**Marillac Room**



**Location: Lower Level**



# Auditorium

The original chapel of Providence Motherhouse, the Auditorium offers a beautiful setting for meetings, events, workshops and more. It is a spacious open area with stained-glass windows, and a space at the front with a projector screen, also suitable for a riser. An upper-level viewing area with tables and chairs provides added flexibility for events. Its historic charm and versatile layout make it perfect for any occasion.

**Location:** Ground Level, behind reception

**Capacity:** 100

**A/V:** Screen, projector, microphone, speakers



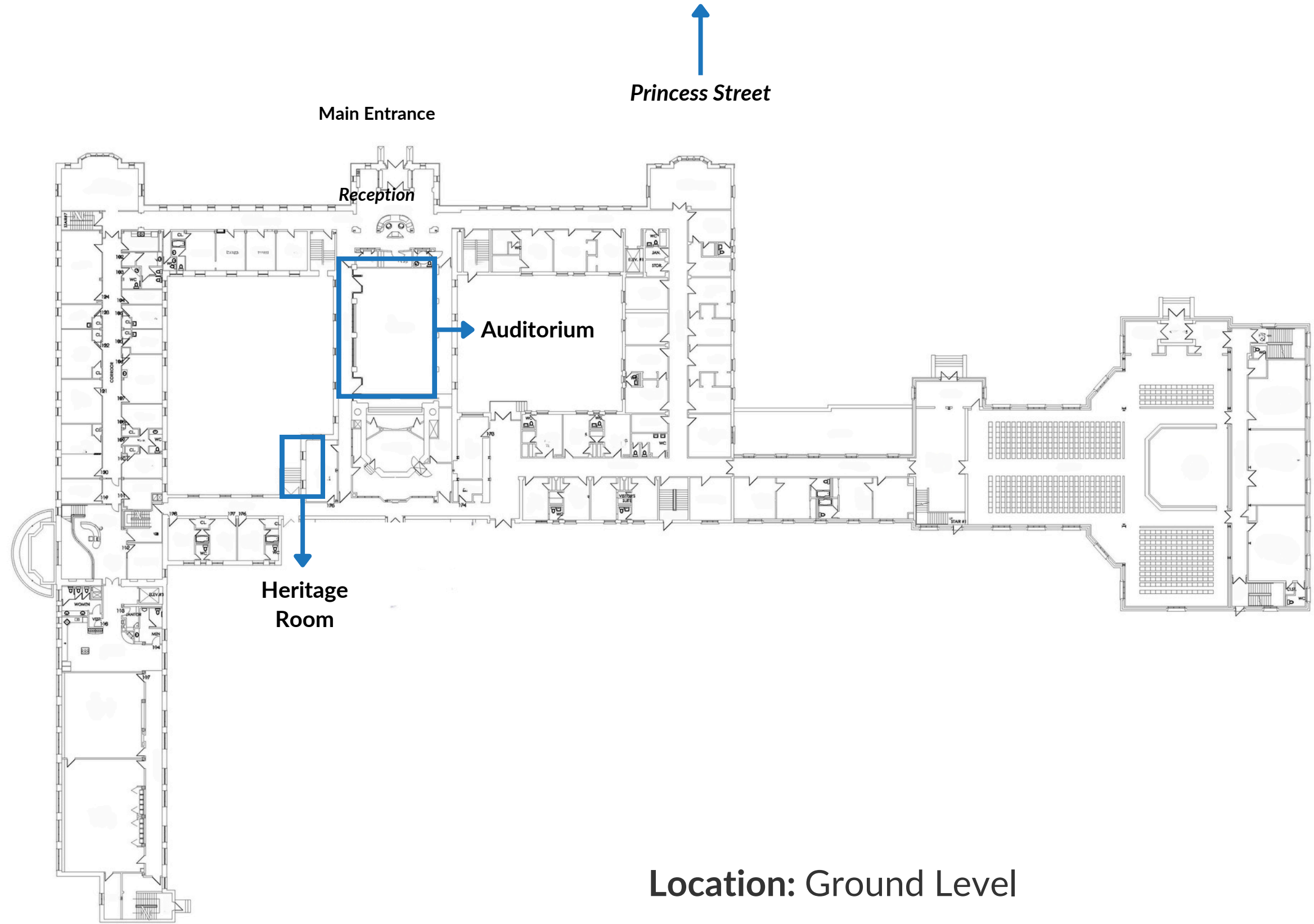
# Heritage Room

An intimate and professional meeting space, ideal for small gatherings, board meetings, or collaborative work sessions. Featuring a conference table, comfortable executive chairs, and a simple, well-lit design. Perfectly suited for small-group discussions and strategic planning in a private setting.

**Location:** Ground Level

**Capacity:** 10

**A/V:** Mobile screen with computer hookup



Location: Ground Level



# Rental Rates

McKinley Hall		
Capacity: 270		
# of guests	Not-for-profit rate	Regular rate
Under 50	\$39.00	\$48.75
50-100	\$48.75	\$61.00
100+	\$61.50	\$78.00

Auditorium		
Capacity: 100		
# of guests	Not-for-profit rate	Regular rate
Under 50	\$39.00	\$48.75
50-100	\$48.75	\$61.00

Marillac Room		
Capacity: 26		
# of guests	Not-for-profit rate	Regular rate
Under 50	\$39.00	\$48.75

Heritage Room		
Capacity: 10		
# of guests	Not-for-profit rate	Regular rate
Under 10	\$26.00	\$32.00

*Please note:* Rental rates are based on our current facilities rate schedule, which helps ensure our spaces remain safe, clean, and accessible for community use. While these rates reflect our standard pricing, we understand that some groups or events may have unique circumstances. In special cases, alternate arrangements or exceptions to standard rates may be discussed and considered on a case-by-case basis. We're committed to being fair, transparent, and fiscally responsible while ensuring our spaces are well cared for and available to the community.

# Rental Information

## Minimum Booking Requirements

3-hour rental required Monday to Sunday, 9 a.m. to 5 p.m.  
2-hour minimum for evening rentals (after 5 p.m.).

## Parking

A limited amount of parking is available onsite, free of charge, in designated areas. Additional parking information will be provided at the time of booking.

## Security Fees

A security fee of \$50 per hour may be charged when a space has been booked outside of regular operating hours (Monday-Saturday, 7 a.m. to 7 p.m.).

## Catering

External catering is permitted for all rentals. Internal catering is provided by Sodexo. For additional information, please contact:

Keir Roy, Chef Manager

[keir.roy@sodexo.com](mailto:keir.roy@sodexo.com)

613-544-4525 x160



# Book your space today!

 [providencevillage.ca/roombookings](https://providencevillage.ca/roombookings)

 613-544-4525

 [bookings@providencevillage.ca](mailto:bookings@providencevillage.ca)

 1200 Princess Street, Kingston ON

